

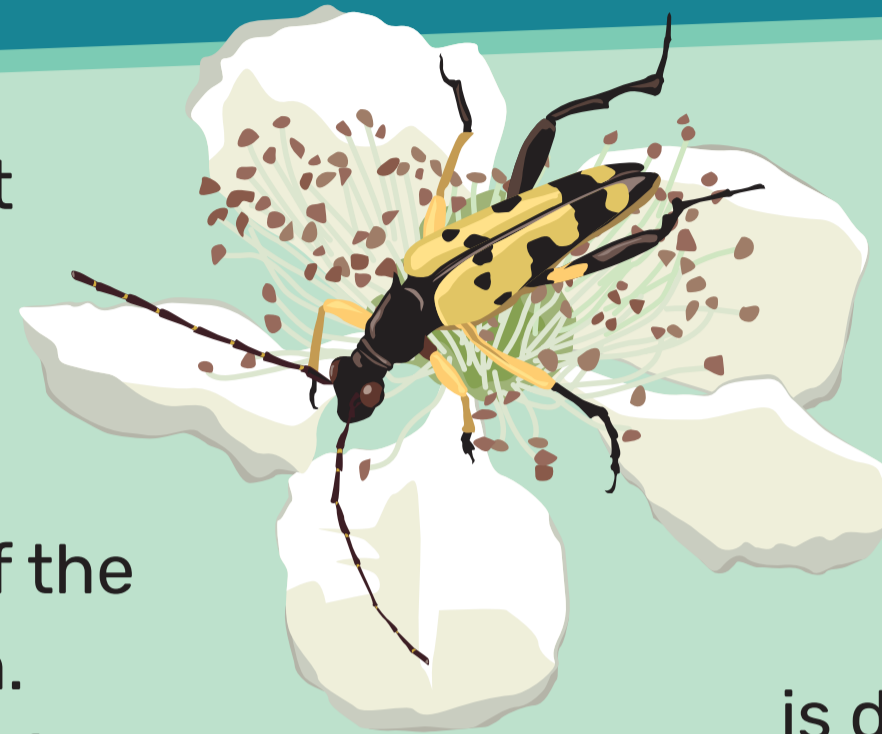
Welcome to The North Moors

at The Christopher Cadbury Wetland Reserve, Upton Warren



Worcestershire
Wildlife Trust

As you walk around the reserve, you might notice that some areas seem to be scruffier than others. Scrub is a really important habitat that we manage on a rotational basis, allowing different parts of the reserve to have different stages of growth. This variety maximises the opportunities of habitat for a wide range of wildlife.



Black & yellow
longhorn beetle

Managing scrub

Coppicing is a traditional management technique of cutting down a tree almost to the ground. The tree grows back but while it does so, sunlight reaches the woodland floor and allows wildflowers to thrive. When coppicing is done on rotation, the different ages of growth in different areas provide opportunities for different wildlife.

Pollarding is a traditional management method of cutting a tree above shoulder height. This is done to ensure that any new growth is above the height that livestock can reach. As with coppicing, the tree regrows and develops a large trunk, often creating cavities that provide an ideal home for bats, small mammals and nesting birds.

Blackthorn and bramble are of particular importance as they provide dense nesting habitat that is safe from predators as well as being an important nectar source for insects. Similarly, hawthorn is a crucial nectar source for hoverflies, beetles and bees in May whilst the berries provide food for birds in autumn.



Bullfinch

Your support

We couldn't work to protect and conserve Worcestershire's fantastic wildlife and wild places without your help. Please support us by becoming a member, volunteering, donating or leaving a gift in your will.